

SunLight6V

New
SunLight6V

Very compact 6.5" TFT display
with full VGA resolution 640x480
and bright LED backlight
for standard PC and video signals

The "SunLight6V" TFT display was developed for mobile measurement technology in test and monitoring vehicles. The focus was on the small dimensions and the standard VGA resolution. The very bright, easy-to-read display can be used optimally especially for measurement technology tasks, as it can be easily controlled via computer via VGA or DVI (HDMI) signal. A handy display and operation unit is provided with the touchpanel variant ST6V-T.

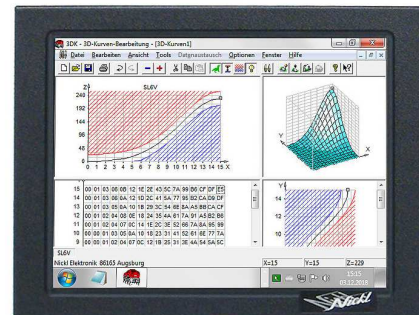
Thanks to the special interface technology, input signals higher than VGA (640x480) can be scaled or cutted with an excellent scaling/zoom function - the "display magnifying glass" - and perfectly presented. The TFT backlight can be dimmed wide for optimal readability in the dark.

The lightweight, very compact "SunLight6V" display can be mounted well in the range of the vehicle A-pillar or the center console with the available fastening possibilities.

Applications

- bright measurement technology display with VGA resolution
- easily mounted at the A-pillar, in the dashboard or in the centre console
- perfect monitor for video camera signals

- Very compact TFT display
- High brightness up to 700cd/m²
- PC graphics and video switchable
- For DVI + VGA and S-Video + FBAS
- "Magnifier" for any cutout of higher resolution
- Optional with a resistiv touch via USB



6.5"
640x480
700cd/m²



SunLight6V

Technical Data

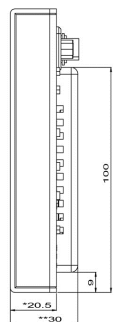
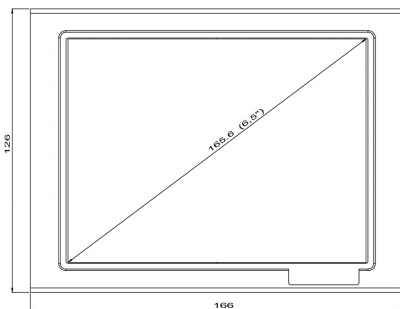
Display/Diagonal	165mm (6,5"), active area (132 x 99)mm ² , 4:3
Resolution	640 x 480 Pixels
Brightness	typ. 5..700cd/m ² (with resistive touch reduced by about 20% each)
Optical characteristics	Contrast typ. 600:1, Response time on/off: typ. 6/19ms viewing angle (O/U/L/R): typ. 80/60/80/80°
Technology	TFT-Stripe-RGB, 6-bit each color (262k colors)
Signal processing	DOS Text, VGA 640x480, SVGA 800x600, XGA 1024x768, etc. @ typ. 56..85 Hz DVI-D digital and VGA/RGB analog 0,7Vpp, H-&V-Sync >>>Magnifier with Zoom/Shrink for each image cutout<<< S-Video and FBAS with PAL-/NTSC-/SECAM-timing, 75 Ohm
Touch-Panel	optional, integrated, resistiv, Mini-USB-port with MouseCtrl driver for Windows 10®, Windows 7® and Windows XP®
Power Supply	9..36VDC, potential sperated, padding protected, typ. 9W at full brightness ShutDown control signal input to turn off via external signal
Connectors	DVI-I (VGA and HDMI via adapter cable), S-Video Mini-DIN 4, FBAS BNC, D-Sub 5 (Power), Mini-USB (Touch)
Case	Polystyrol, impact resistant, black, BxHxT: (166 x 126 x 30)mm ³ Fixing: 4x M4 threaded inserts (63,7mm x 63,7mm) for alu-pyramid
Temperature Ranges	Operation: typ. -20..60°C Storage: typ. -20..80°C
Mass (touch variant)	typ. 497g (547g)

Accessories

- 1EYCH-MP1
Assembly pyramid, 4x screw flank, aluminium milled black, for surface and pipe attachment
- 1EYCBSH-0904-HQ
Ball joint with ball plate and hull, for attachment to the aluminium pyramid (MP1)
- 1EYH-SH-SNPUMPE
Suction cup, diameter 120mm, pump with indicator, screwable on ball joint
- 1EZKA-DB5BAN2-x
Cable for DC supply, 5-pole D-Sub jack, 2x banana plug + 1x crimp connector, L=2/5/7m

Order Codes

- 1EMSL6V-T
TFT-display, 6.5", SunLight6V, 640x480, 700cd/m², U_{in}=9..36V, multivideo standards, touch panel
- 1EMSL6V
TFT-display, 6.5", SunLight6V, 640x480, 700cd/m², U_{in}=9..36V, multivideo standards, especially for mobile
- Further variants on request -



*21.5 für Touch-Version
**31 für Touch-Version

